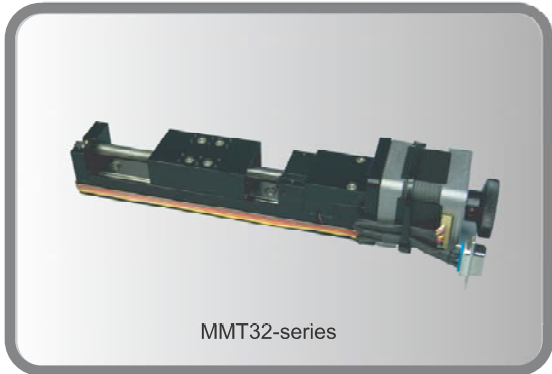
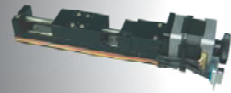


# MMT32 - series | Miniature Motion Control Stages



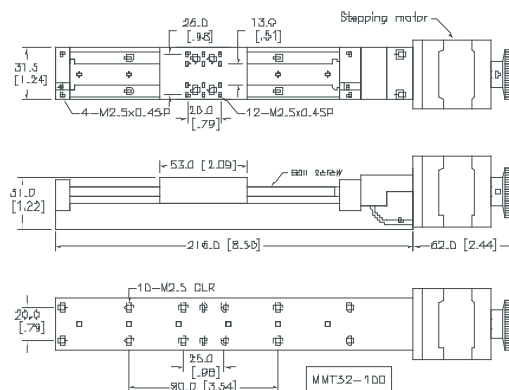
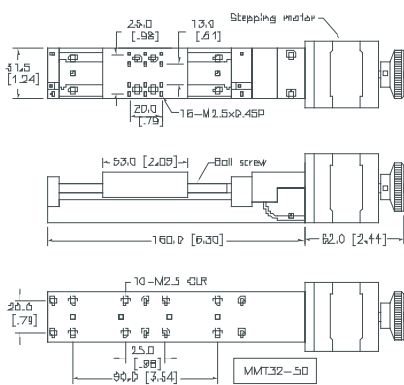
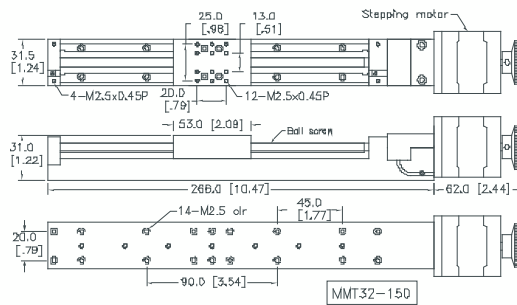
MMT32-series

- Stage Dimension : 32 x 50 mm
- Resolution : 0.625  $\mu$ m
- Repeatability :  $\pm$  0.625  $\mu$ m
- Position Accuracy :  $\pm$  0.017  $\mu$ m
- Straightness :  $\pm$  0.015 mm
- Load capacity : 5 kg
- To order Imperial model please add \* I \* to Item

## FEATURES

- The MMT32-series features C7 ball-screw driven on 2 linear precision T1 Rail design reaching high accuracy and loading ( High class ball screw available upon request )
- Motorised systems with two phase stepping motor applied to the Micro-Controlled Controller (TRC-series)
- Utilising high speed coupling to combine stepping motor and main screw rod for increase accuracy and possessing great smoothness with zero-backlash
- Tackle limit switch protect the signals from oil, temperature and noise effect

## MMT32 - series



Item Number	Travel Dimensions (mm)	Platform Dimensions (mm)	Load Capacity (mm)	Resolution (um)	Repeat-ability $\pm$ (um)	Position Accuracy $\pm$ (mm)	Straightness $\pm$ (mm)	Weights (Kg)
MMT32-50	50							0.65
MMT32-100	100	32x50	5	0.625	0.625	0.017	0.015	0.73
MMT32-150	150							0.82

自動定位系統

Optical Table

Stage

Optics Mounts

Post & Component

Motion System

Miniature Motion Control Stages

MMT32 - series

Educations

Laser Equipment

Lasers

Optics & Crystals