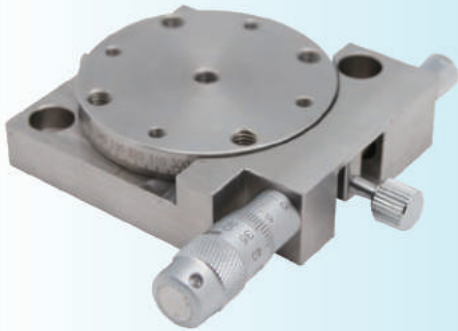


Stainless Precision Rotary Stages

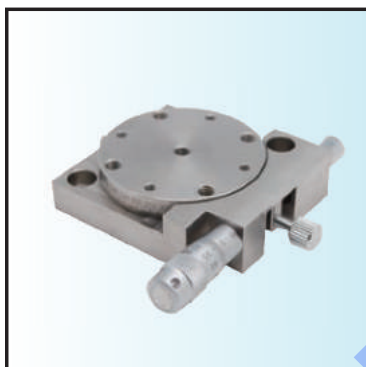
SRQ-59



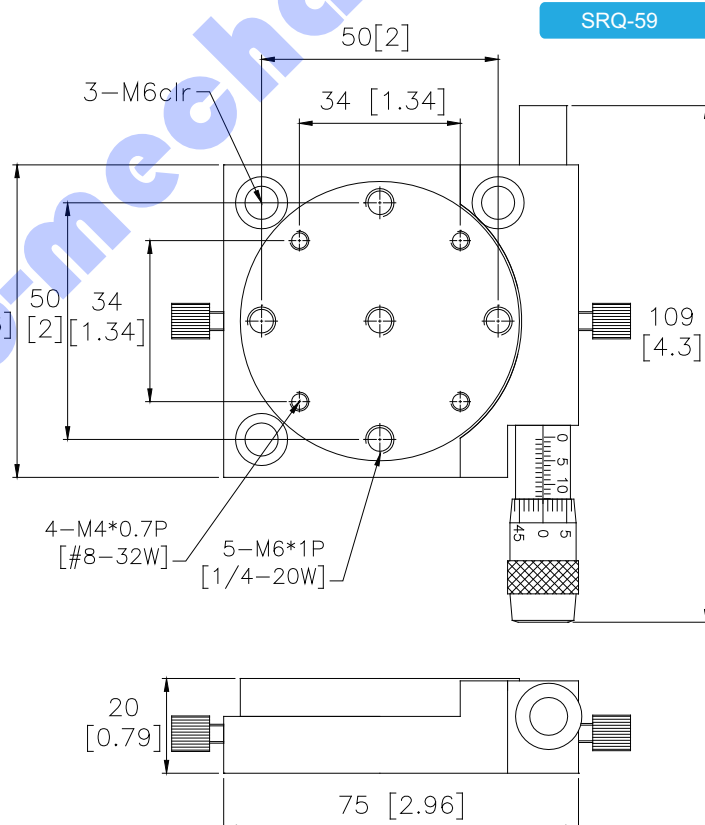
Overview

- Stage Diameter : Ø59mm (2.32")
- Readable Resolution : 1°
- Travel Accuracy : 0.02 mm
- Coarse Adjustment : 360° coarse rotation when loosen the side screw
- Fine Adjustment : ±5° precision adjustment
- Accuracy : 1arc-sec
- Screw Type : 100 pitch leadscrew or micrometer available
- The stainless material can apply to vacuum and high temperature experimental environment
- Metric / Imperial version available
- Material: Aluminum with black anodized
- To order Imperial model please add *I-* to Item number

Specification & Item Numbers



SRQ-59



Item Number	Diameter (mm / inch)	Rotation Range (Coarse / Fine)	Drive Type	Travel Accuracy (mm)	Readable Resolution (degree)	Parallelism (mm)	Weight (kg)
SRQ-59	Ø59 (2.32")	360° cont / ±5°	M	0.02	1°	0.05	0.24
SRQ -59A	Ø59 (2.32")	360° cont / ±5°	100	0.02	---	0.05	0.24