



BSD

Beam Steering Sets

Optical Tables

Stages

Optical Mounts

Components

Motion Systems

Education Systems

Lasers

Optics & Crystals

Other Equipment



Overview

- Mirror Diameter: Ø 50.0 mm (2")
- Post Diameter: Ø 38.1 mm (1.50")
- Post Length: 355.6 mm (14")
- SR-B base diameter: Ø 76 x 16 mm
- Tilt Range: ± 4°
- Weight: 2.76 kg (BSD-2) / 0.72 kg (BSD-T2A)
- Driver Type: 100-pitch screws
- Full beam direction and height control
- Disc spring MM-1 mount with 100-pitch screw provides stable fine angular adjustments
- Metric version
- To order Imperial model please add * I- * to Item

Specification & Item Numbers



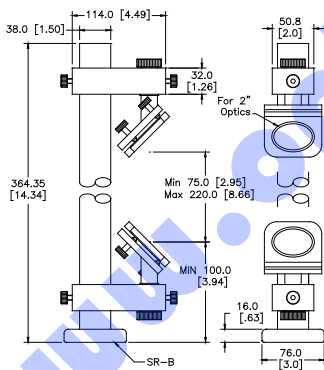
BSD-2A



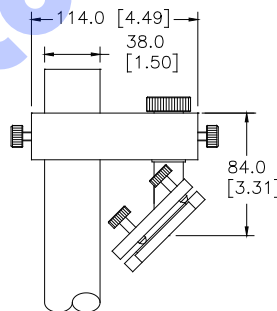
BSD-T2A



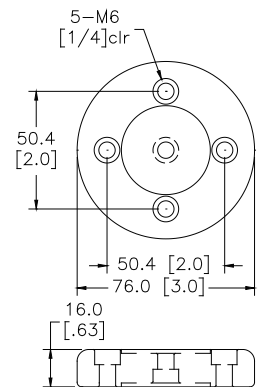
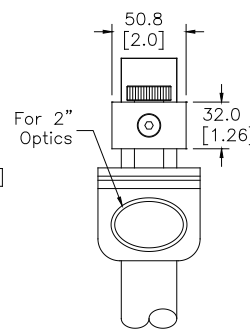
SR-B



BSD-2A



BSD-T2A



SR-B

- **100** = 100 pitch screw / **130 (F)** = 130 pitch screw / To order Imperial model please add * I- * to Item number

Item Number	Drive Type	Mirror Diameter Ø mm (inch)	Post Diameter Ø mm (inch)	Post Length Ø mm (inch)	Weight (kg)
BSD-2A	100	50.0 (2")	38.1 (1.50")	355.6(14")	2.76
BSD-T2A	100	50.0 (2")	38.1 (1.50")	---	0.72
SR-B		Size Ø 76.0x16.0 (3.0x0.63")			