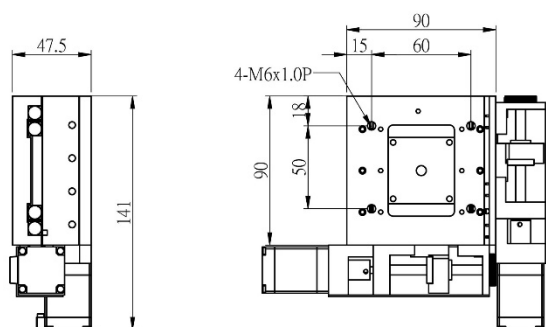
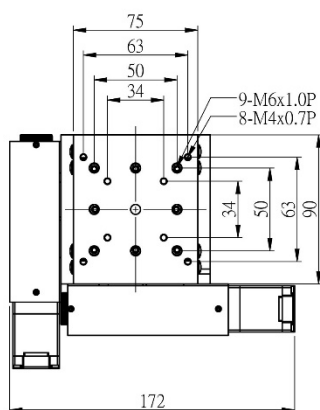


JT-C3-SERIES

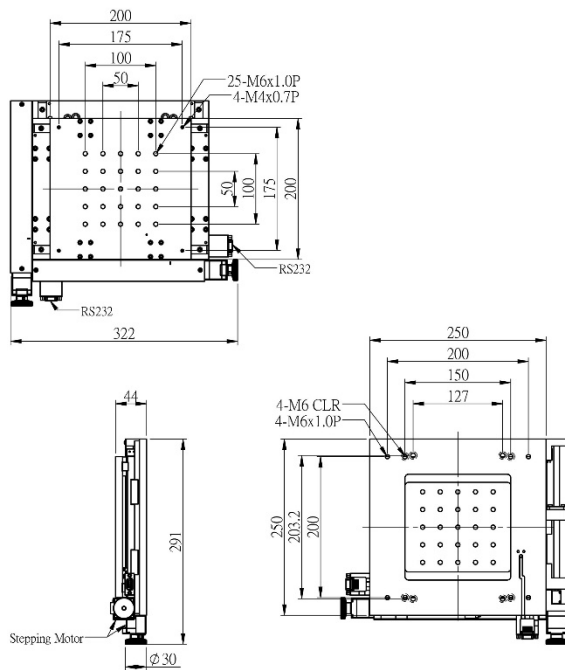
The C3 ball screw JTH is suitable for mounting in microscope and other scanning systems. XY configuration with an excellent orthogonality and 2 phase stepping motor. The JTH has two RS232 connectors used to connect to the STPHP or STPHF. High repeatability and high position accuracy.

ITEM	PLATFORM	TRAVEL RANGE	RESOLUTION 1600 Rev	REPEATABILITY	LOAD CAPACITY	WEIGHT
JT90-30-C3	75x90mm	30mm	0.625um	±1um	5kg	1.6kg
JT200-100-C3	200x200mm	100mm	0.625um	±1um	20kg	4.3kg
JT250-130-C3	250x250mm	130mm	0.625um	±1um	20kg	5kg
JT360-250-C3	360x360mm	250mm	1.25um	±1.25um	40kg	5kg
JT640-350-C3	640x640mm	350mm	2.5um	±2.5um	40kg	19kg

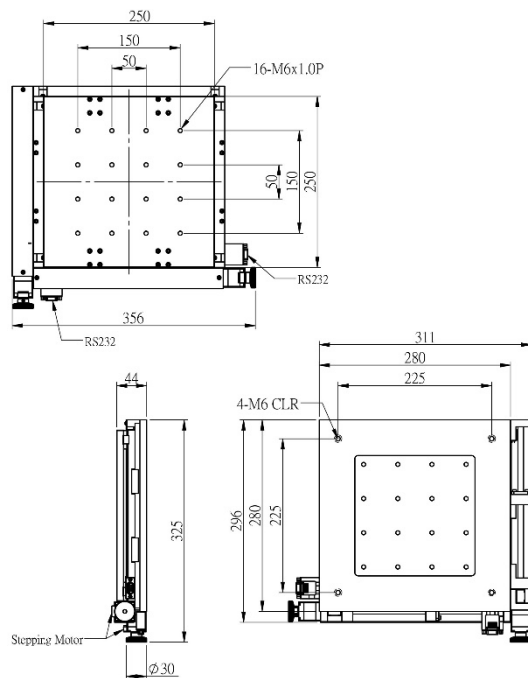
JT90-30-C3



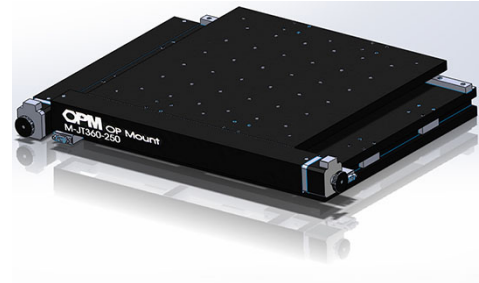
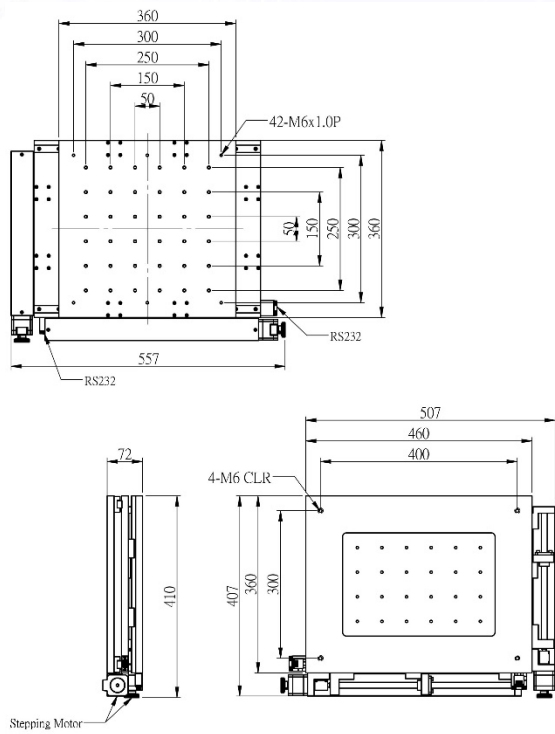
JT200-100-C3



JT250-130-C3



JT360-250-C3



JT640-350-C3

