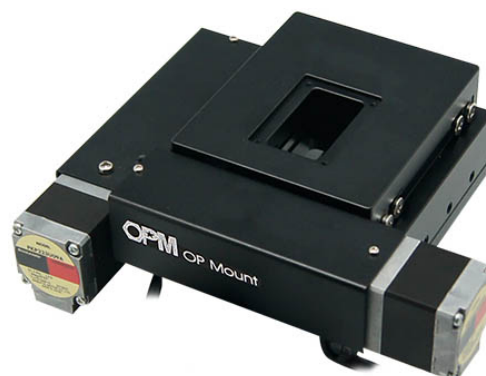
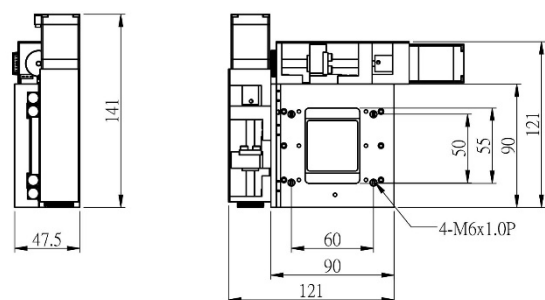
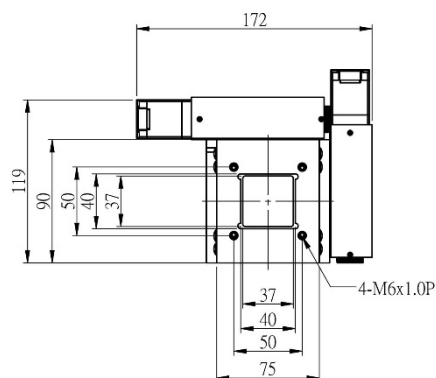


JTH-C7-SERIES

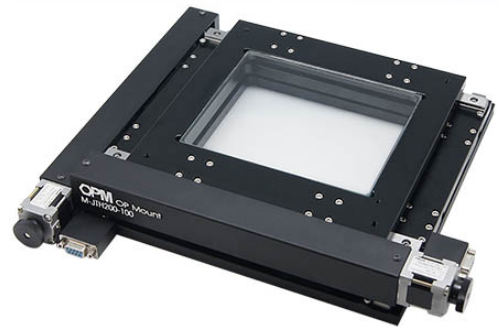
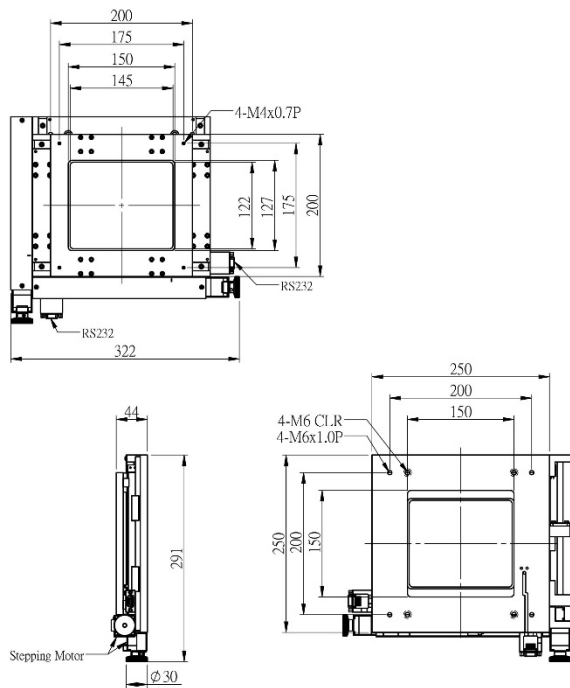
The JTH is suitable for mounting in microscope and other scanning systems. XY configuration with an excellent orthogonality and 2 phase stepping motor. The JTH has two RS232 connectors used to connect to the STPHP or STPHF. High repeatability, high position accuracy and central through hole structure.

ITEM	CENTRAL APERTURE	PLATFORM	TRAVEL RANGE	RESOLUTION 1600 Rev	POSITIONING ACCURACY	REPEATABILITY	WEIGHT
JTH90-30-C7	37X37mm	75x90mm	30mm	0.625um	±50um/300mm	±1um	1.5kg
JTH200-100-C7	145x122mm	200x200mm	100mm	0.625um	±50um/300mm	±1um	4.3kg
JTH250-130-C7	176x176mm	250x250mm	130mm	0.625um	±50um/300mm	±1um	5kg
JTH360-250-C7	190x290mm	360x360mm	250mm	1.25um	±50um/300mm	±1.25um	15kg
JTH640-350-C7	250x250mm	340x400mm	350mm	2.5um	±50um/300mm	±2.5um	19kg

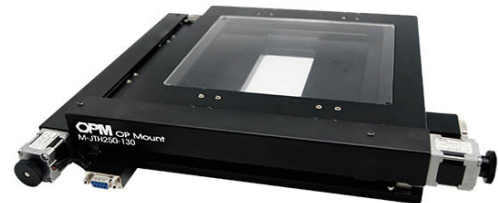
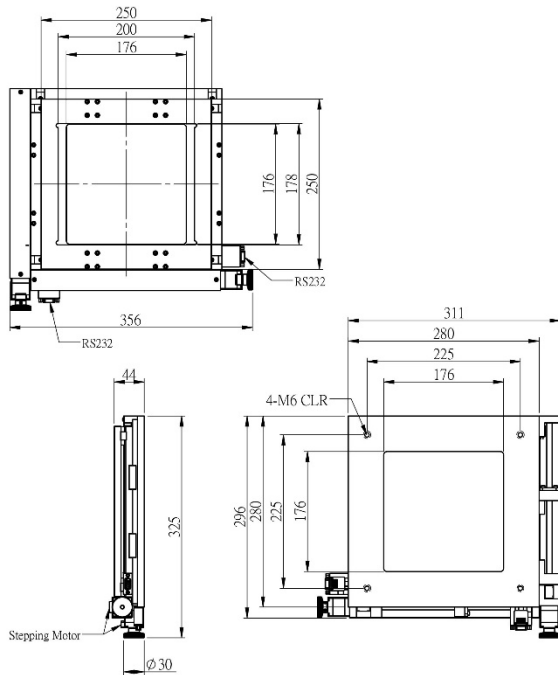
JTH90-30-C7



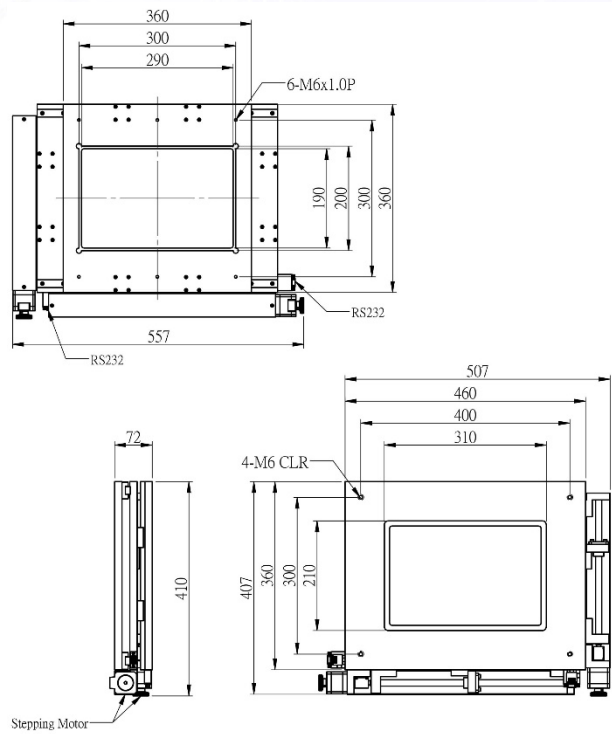
JTH200-100-C7



JTH250-130-C7



JTH360-250-C7



JTH640-350-C7

