

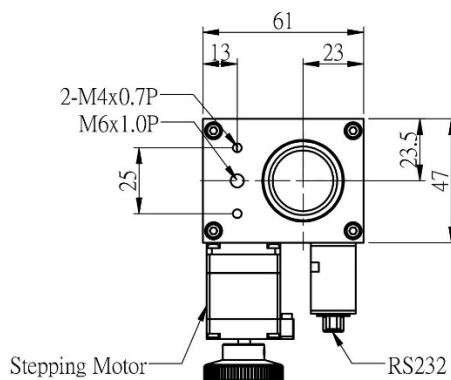
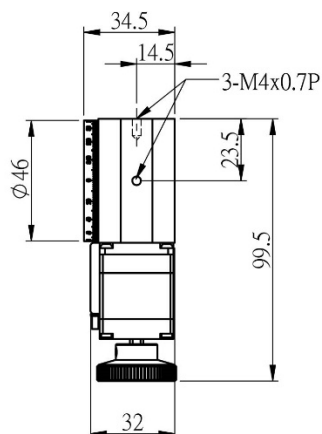
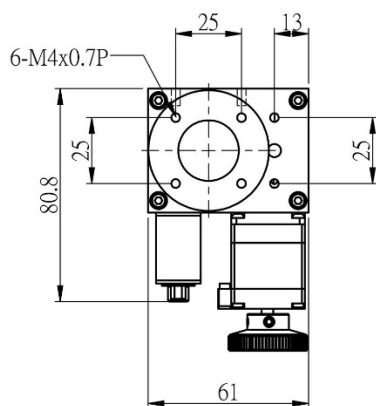
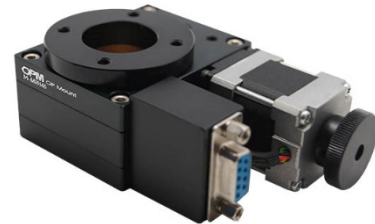
MRH-SERIES

When using the STPHP and STPHF micro-stepping motor controller the MRH can provide arc-second resolution. With an upper and lower precision bearing structure, it has good performance in concentricity and is compatible to with 0.5" to 4.0" inch optics. Includes home sensor.

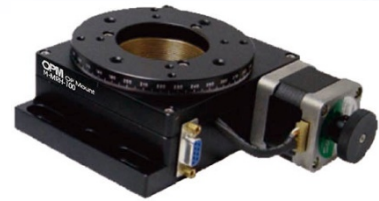
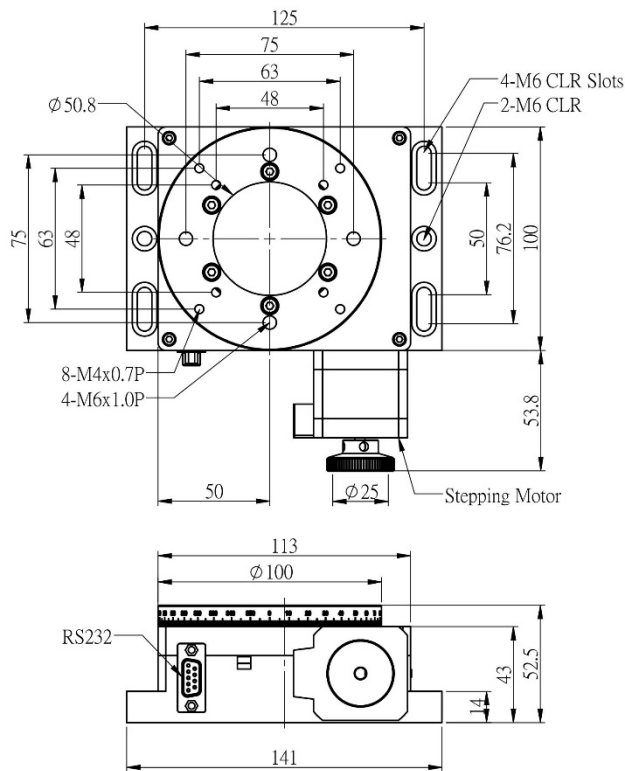
- The MRH-46 rotates every 90 turns of the stepper motor
- The MRH-100 rotates every 180 turns of the stepper motor
- The MRH-160 rotates every 180 turns of the stepper motor
- The MRH-200 rotates every 240 turns of the stepper motor

ITEM	PLATFORM	CENTRAL APERTURE	RESOLUTION 1600 Rev	REPEATABILITY	LOADING	THREAD HOLE	WEIGHT
MRH-46	Φ46mm	Φ10.5inch	0.0025°	±0.0025°	5kg	M16X1P	1.5kg
MRH-100	Φ100mm	Φ2inch	0.0025°	±0.0025°	10kg	M52X1P	2.2kg
MRH-160	Φ160mm	Φ3inch	0.00125°	±0.00125°	20kg	M78X1P	8kg
MRH-200	Φ200mm	Φ4inch	0.001°	±0.00125°	30kg	M103X1P	12kg

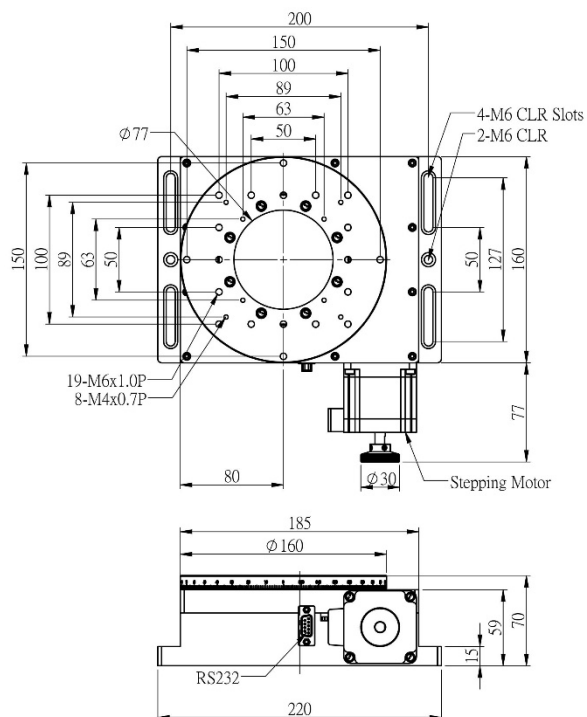
M-MRH-46



M-MRH-100



M-MRH-160



M-MRH-200

