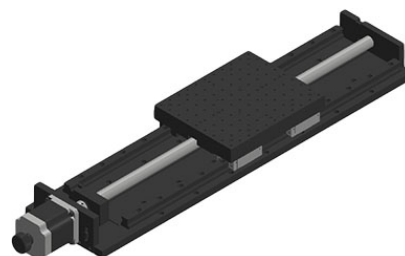
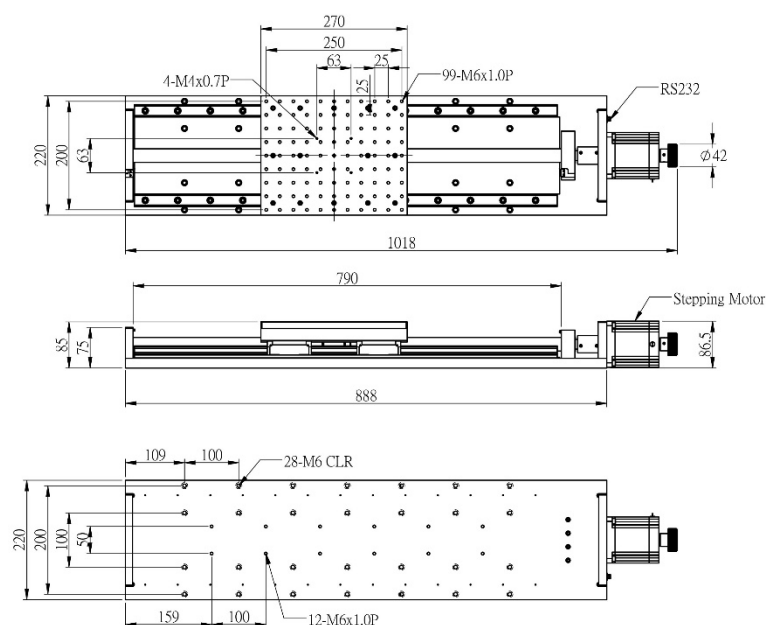


## MTP220-C7-SERIES

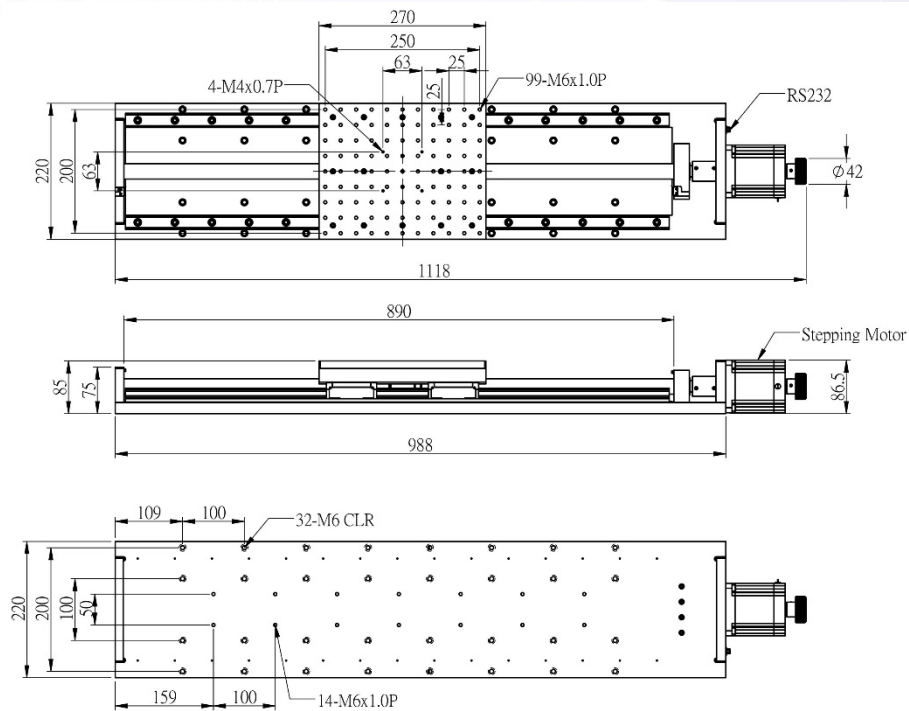
An MTP motorized linear stage supported by ball bearing linear guide. Optimized for high load capacity, high resolution and smooth movement. Different from the trapezoidal screw, the ball screw provides low backlash, low wear and high positioning accuracy.

ITEM	PLATFORM	TRAVEL RANGE	RESOLUTION 1600 Rev	POSITIONING ACCURACY	REPEATABILITY	LOADING	WEIGHT
MTP220-500-C7	220x220mm	500mm	3.2um	±50um/300mm	±3.0um	50kg	39kg
MTP220-600-C7	220x220mm	600mm	3.2um	±50um/300mm	±3.0um	50kg	40kg
MTP220-700-C7	220x220mm	700mm	3.2um	±50um/300mm	±3.0um	50kg	41kg
MTP220-800-C7	220x220mm	800mm	6.25um	±50um/300mm	±6.25um	50kg	42kg
MTP220-900-C7	220x220mm	900mm	6.25um	±50um/300mm	±6.25um	50kg	43kg
MTP220-1000-C7	220x220mm	1000mm	6.25um	±50um/300mm	±6.25um	50kg	44kg

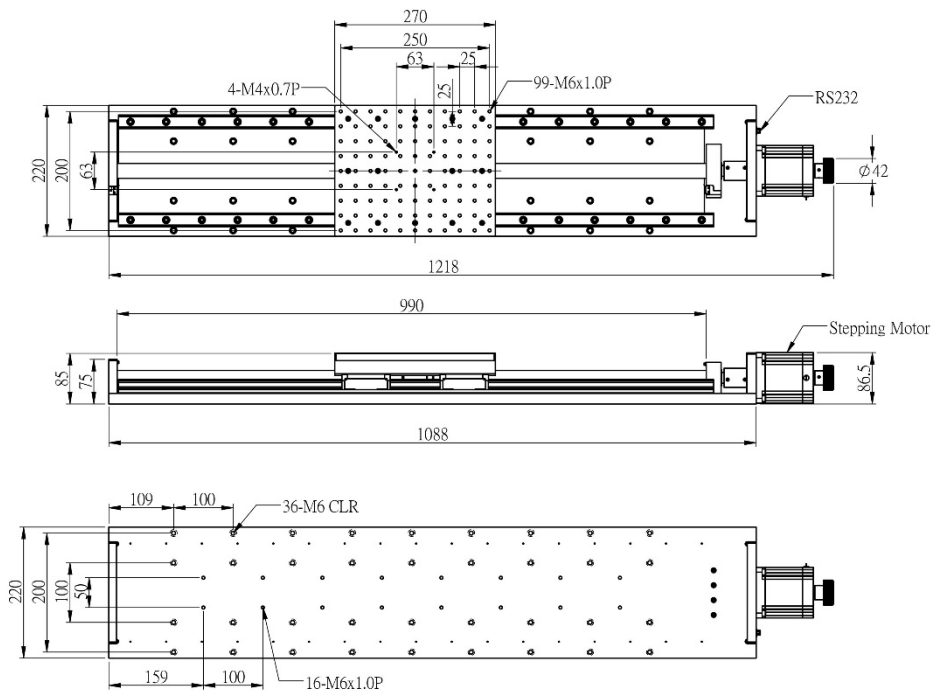
### M-MTP220-500-C7



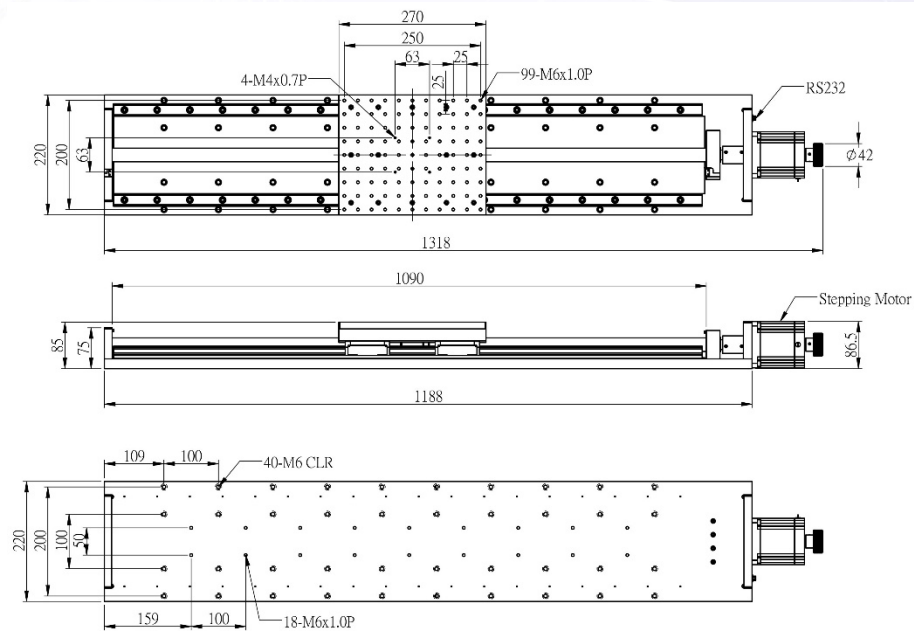
## M-MTP220-600-C7



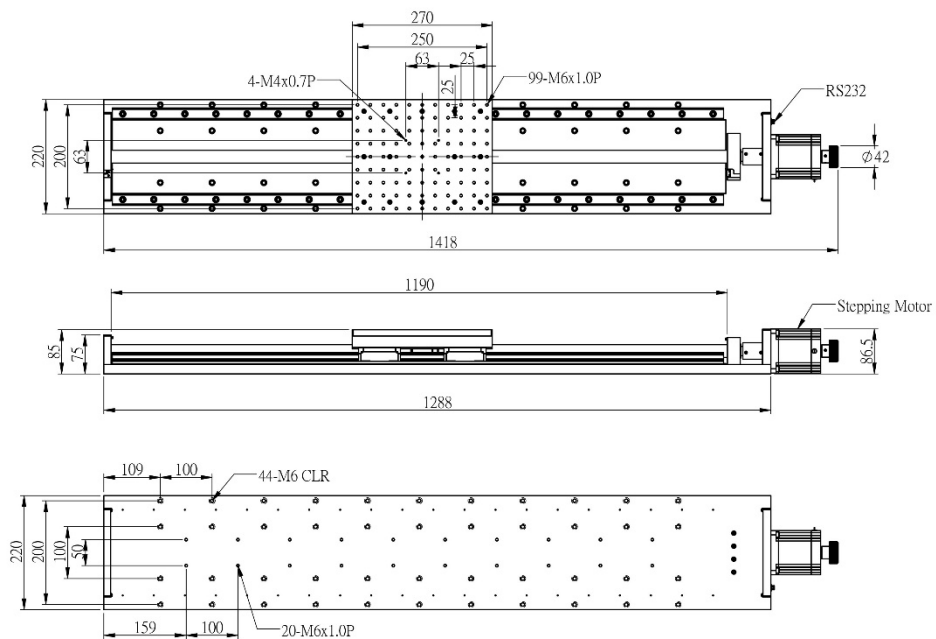
## M-MTP220-700-C7



## M-MTP220-800-C7



## M-MTP220-900-C7



## M-MTP220-1000-C7

