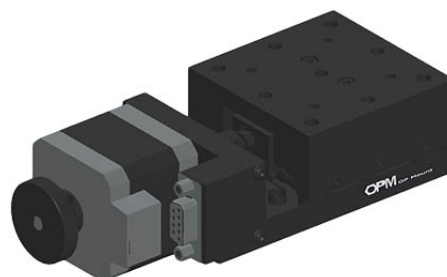
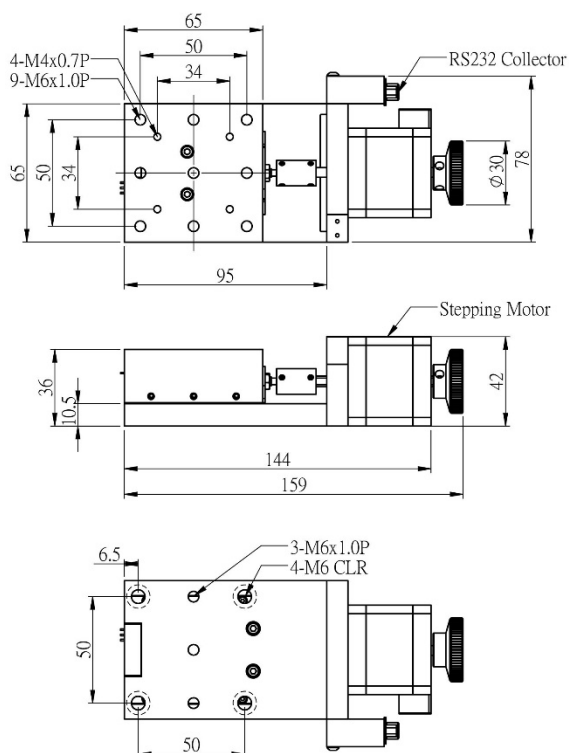


## MTW-C7-SERIES

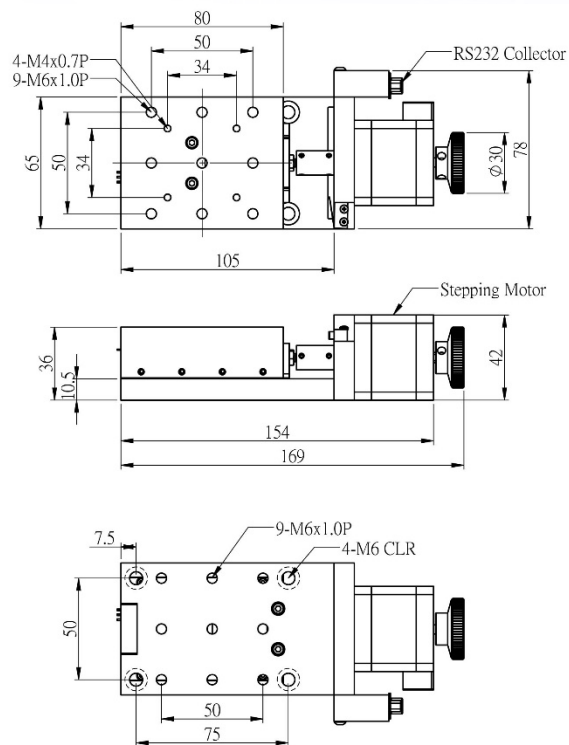
A compact motorized linear Stage constructed by V-Cross roller guide and precision ball screw. The MTW has better positioning accuracy, lower thickness and is suitable for use in small spaces. Lasts 20%~40% longer than the PMT Series

ITEM	PLATFORM	TRAVEL RANGE	RESOLUTION	POSITIONING ACCURACY	REPEATABILITY	LOADING	WEIGHT
MTW65-25-C7	65x80mm	25mm	1.0um	±50um/300mm	±1um	5kg	1kg
MTW65-40-C7	65x80mm	40mm	1.0um	±50um/300mm	±1um	5kg	1.1kg
MTW80-30-C7	80x80mm	30mm	1.0um	±50um/300mm	±1um	5kg	1.2kg
MTW80-50-C7	80x80mm	50mm	1.0um	±50um/300mm	±1um	5kg	1.5kg
MTW100-50-C7	100x100mm	50mm	1.0um	±50um/300mm	±1um	5kg	2.1kg

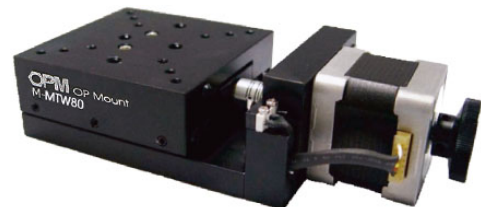
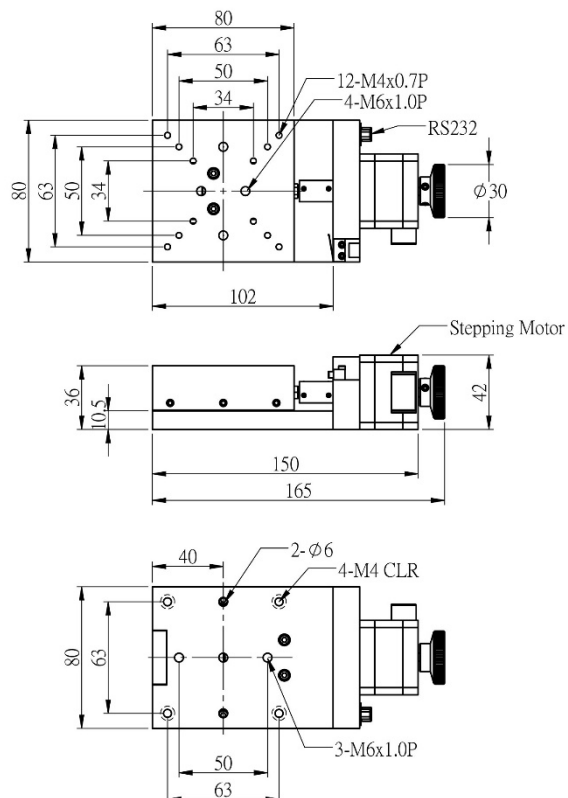
### MTW65-25-C7



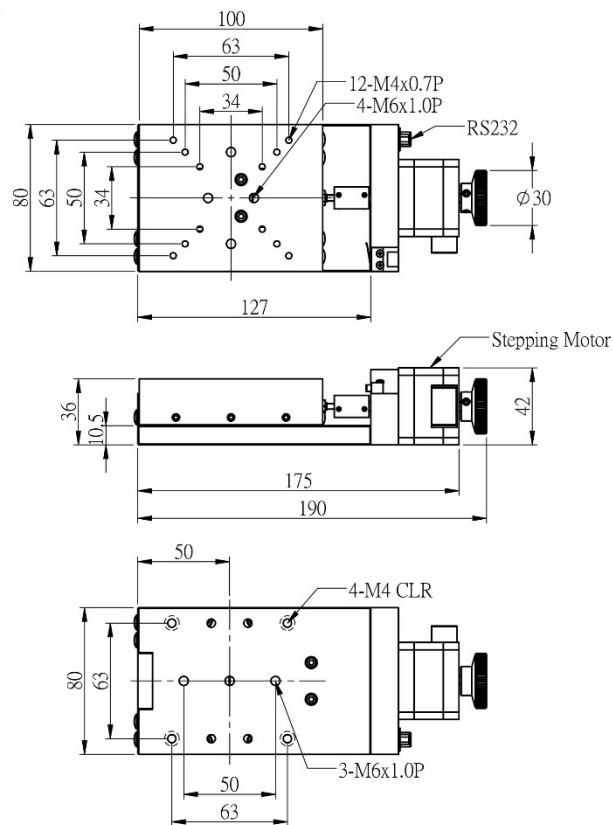
## MTW65-40-C7



## MTW80-30-C7



## MTW80-50-C7



## MTW100-50-C7

