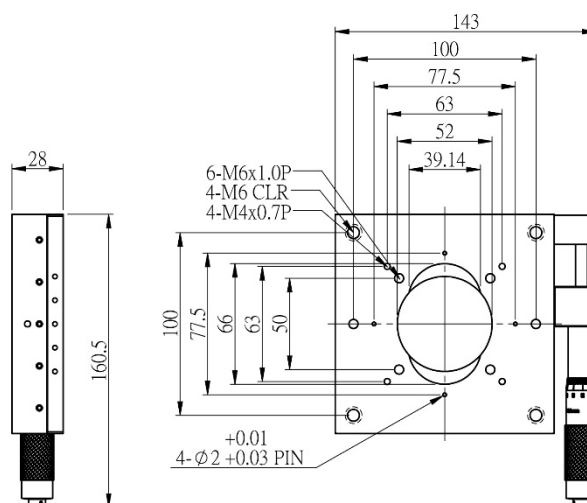
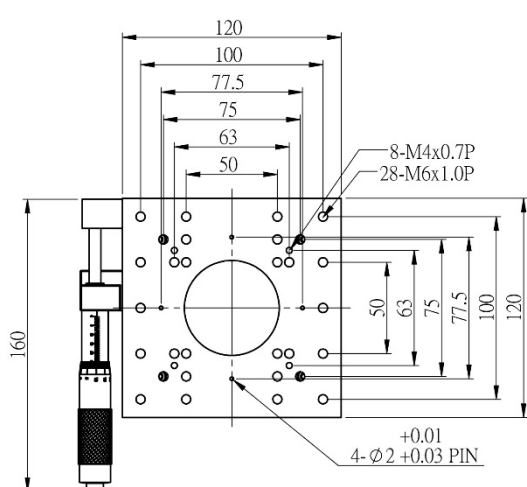


## TSS120H-2 SERIES

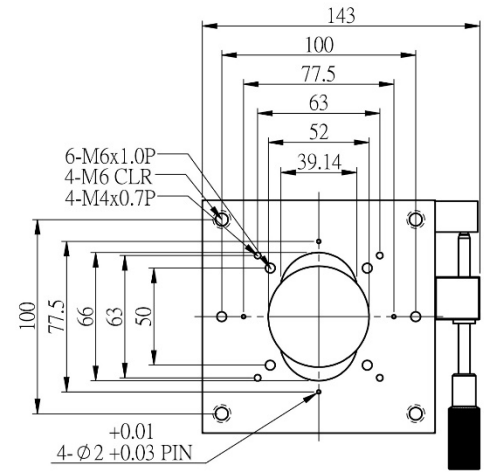
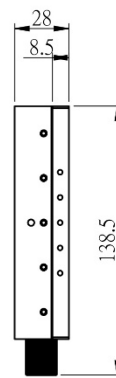
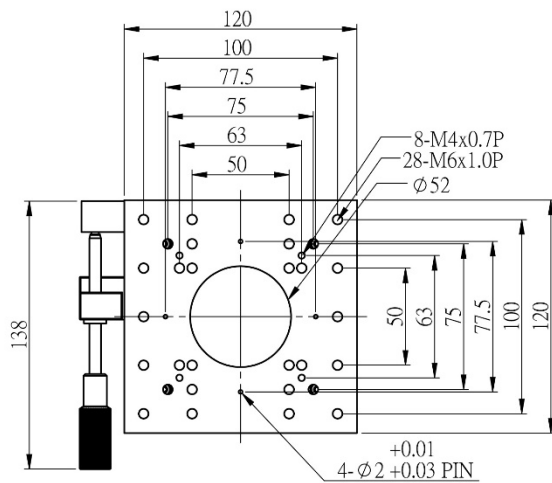
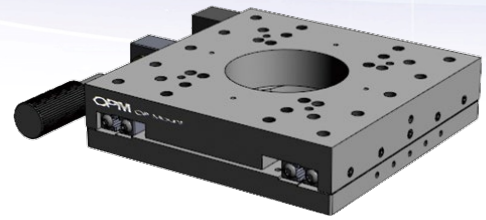
Precision and Stable Linear Stage, 2" Travel Series. Designed with carbon steel rails and crossed roller guides, it offers excellent linearity and load capacity. The one-piece design can achieve great orthogonality at XY direction and the 52mm diameter through hole at the centre of the stage provides space for the light beam to pass through.

ITEM	PLATFORM SIZE	ACTUATORS	AXIS	TRAVEL	STRAIGHTNESS	PARALLELISM	RESOLUTION	LOAD
TSS120HX-2								
TSS120HX-2A								
TSS120HXY-2								
TSS120HXY-2A								

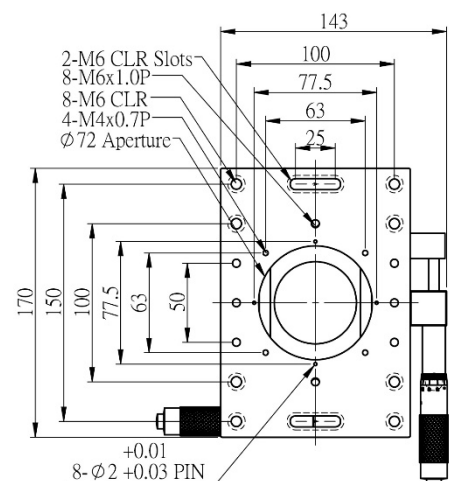
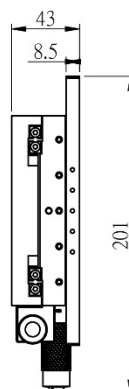
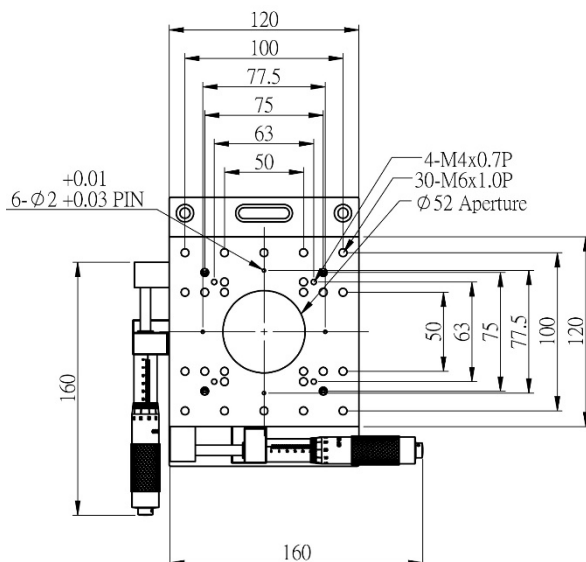
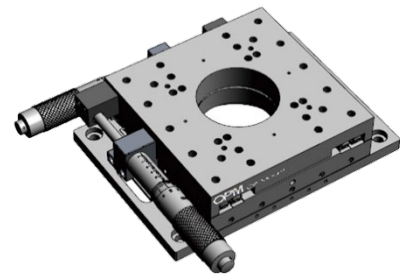
### TSS120HX-2



## TSS120HX-2A



## TSS120HXY-2



## TSS120HXY-2A

