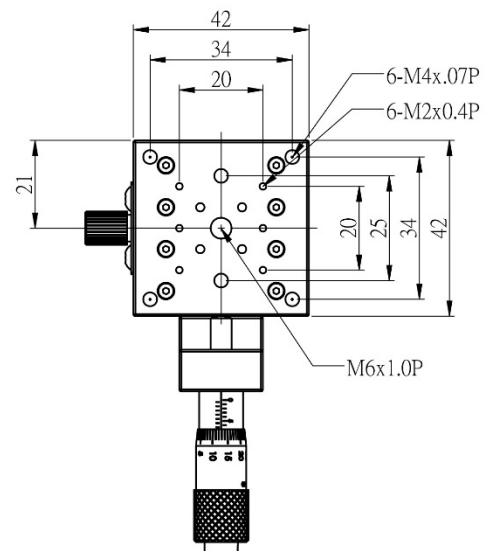
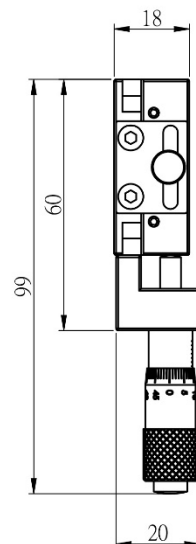
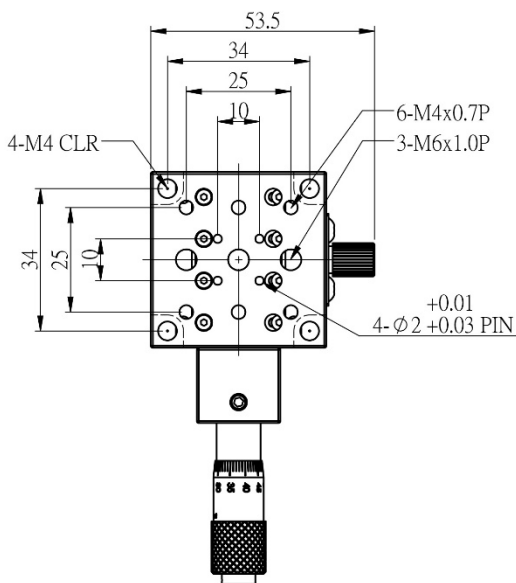
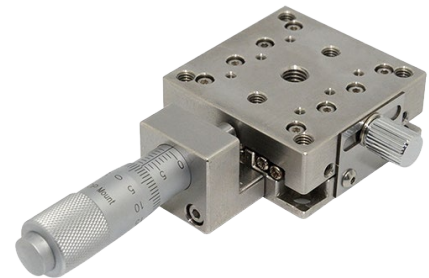


STCS42-SERIES

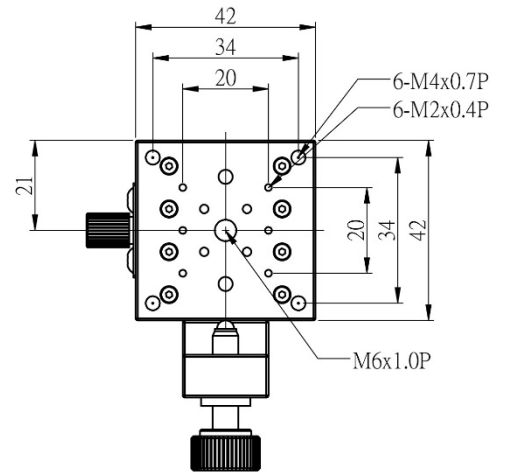
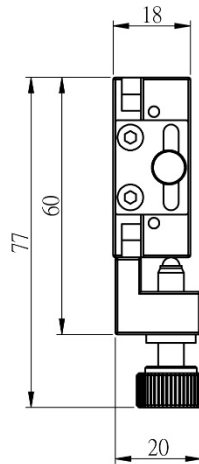
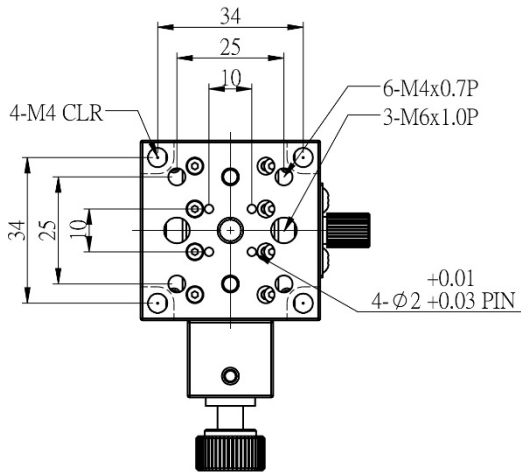
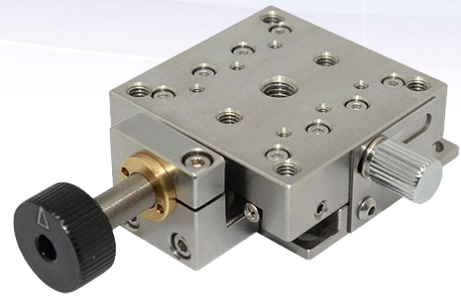
Stainless Precision Linear Stage, 05" Travel Series. Using stainless steel, with good rigidity and stability, cross ball bearing with low wear and high linearity characteristics.

ITEM	PLATFORM SIZE	ACTUATORS	AXES OF TRAVEL	TRAVEL	ROTATION CENTRE HEIGHT	WEIGHT
STCS42X-05						
STCS42X-05A						
STCS42XY-05						
STCS42XY-05A						
STCS42XYZ-05						
STCS42XYZ-05A						

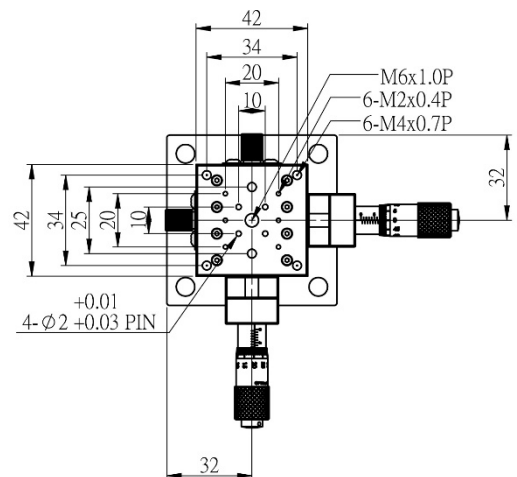
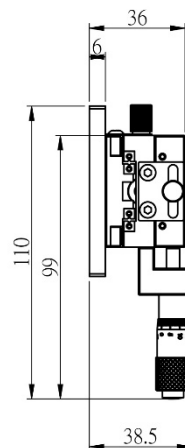
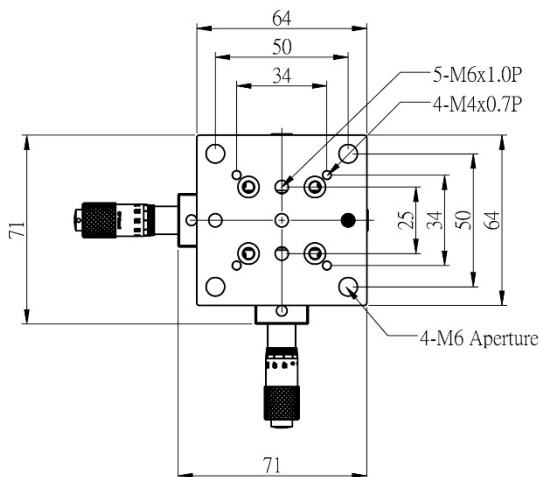
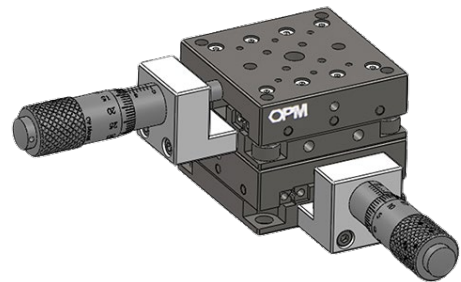
STCS42X-05



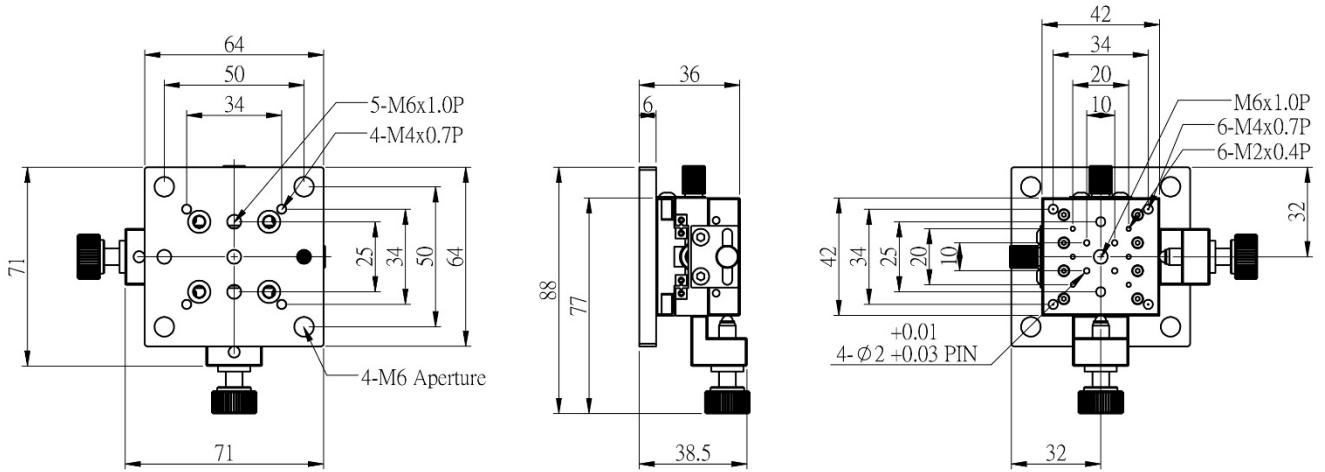
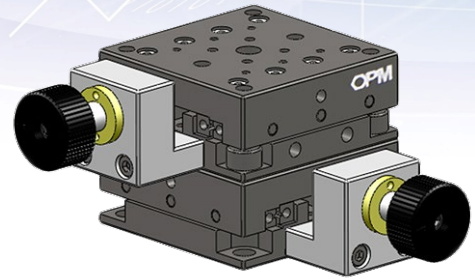
STCS42X-05A



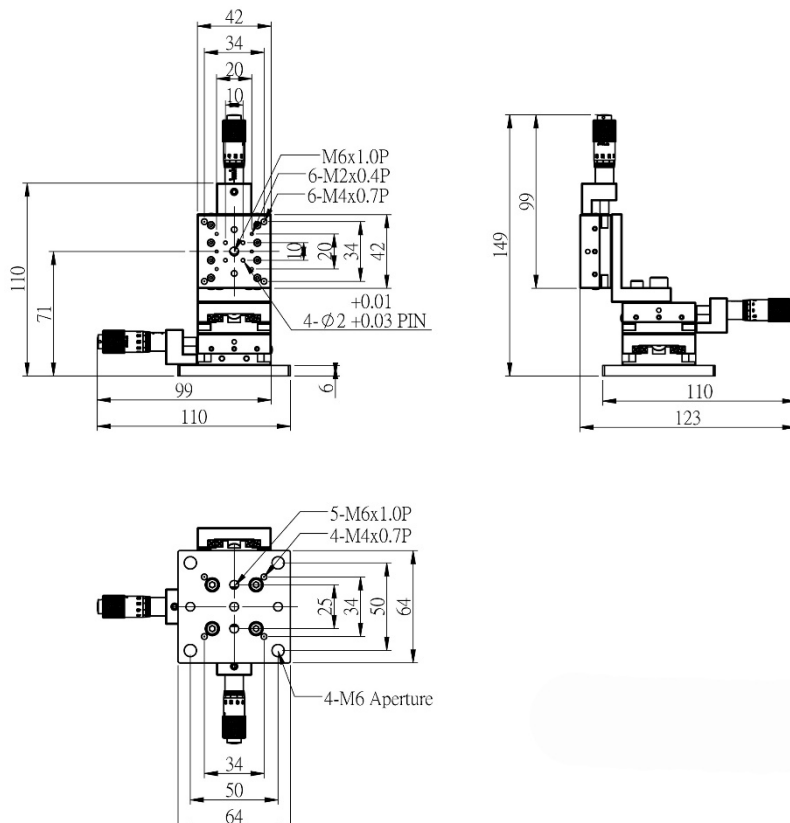
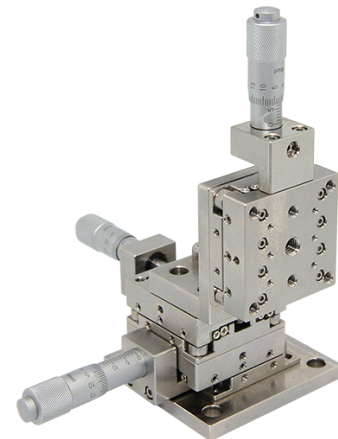
STCS42XY-05



STCS42XY-05A



STCS42XYZ-05



STCS42XYZ-05A

