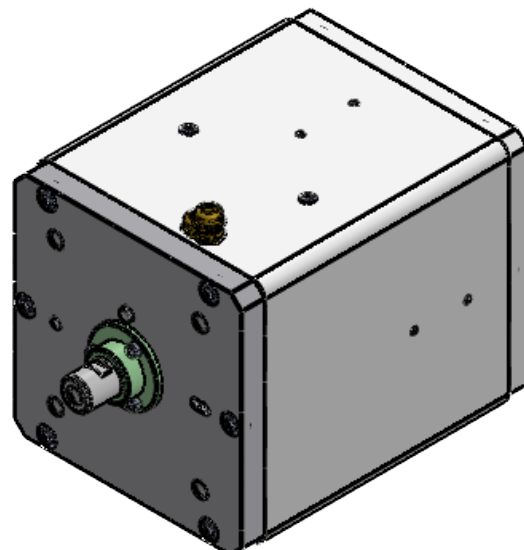
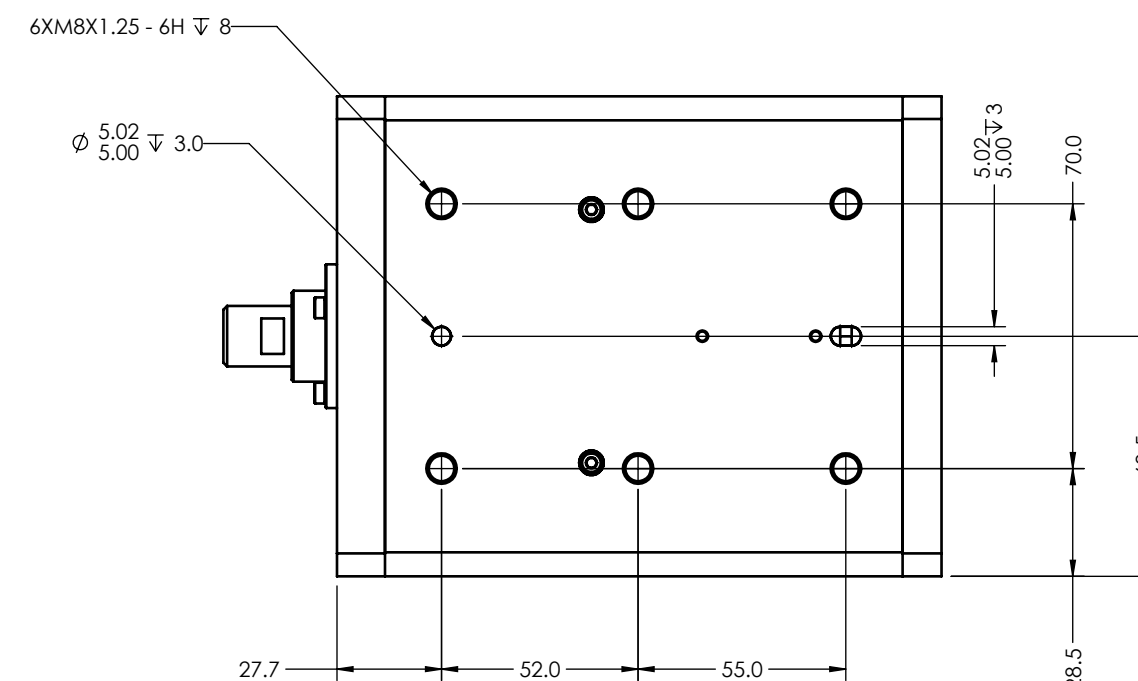
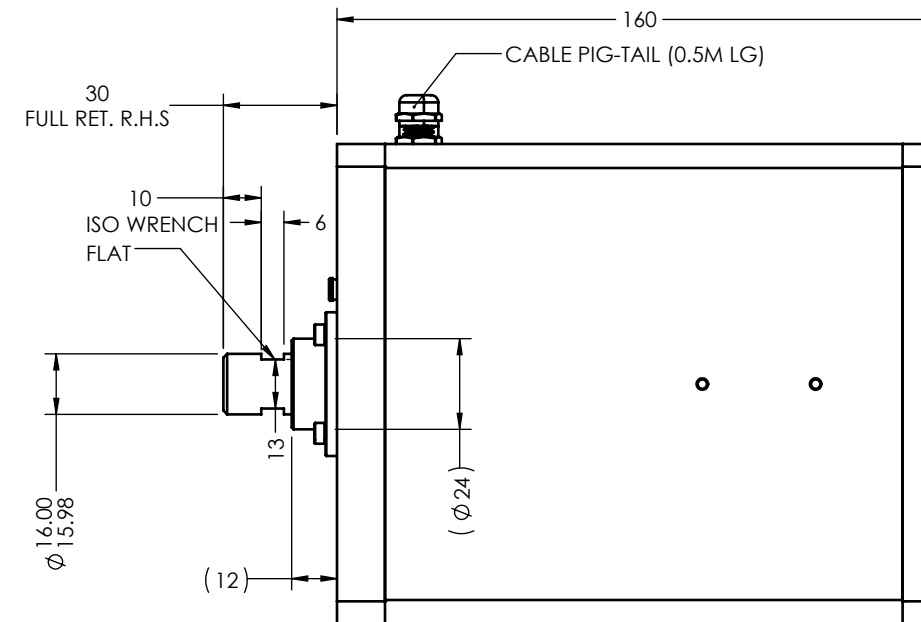
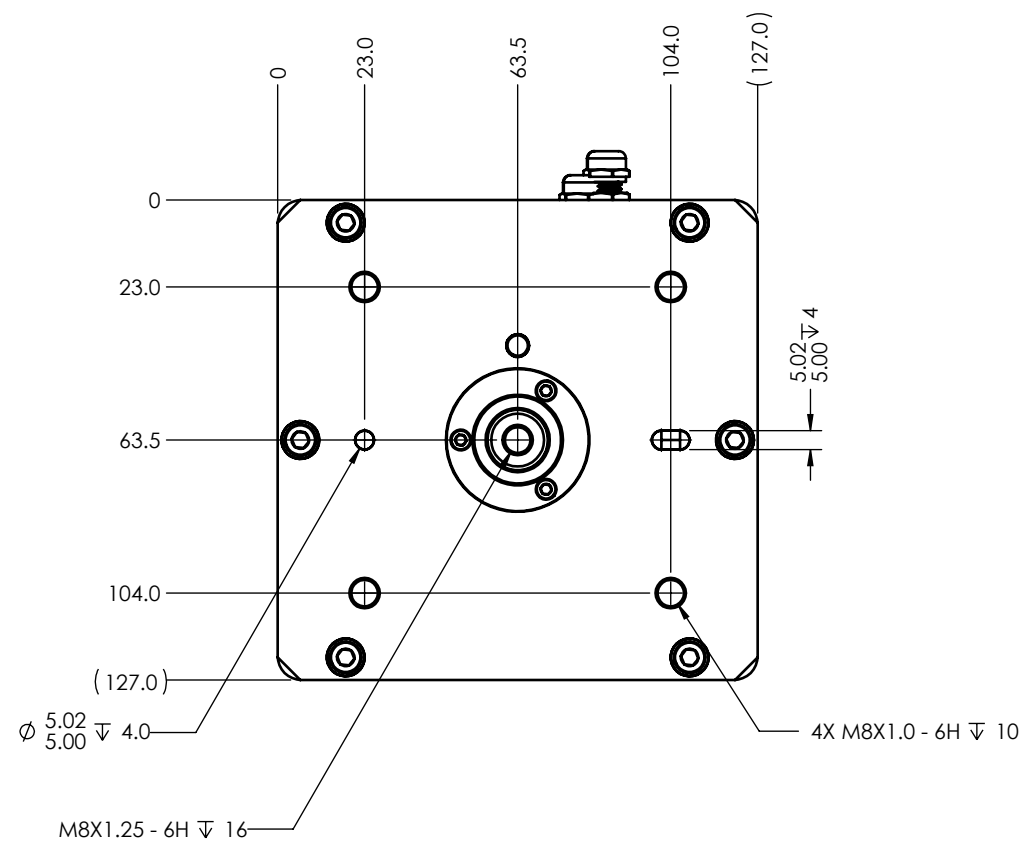


NOTES (UNLESS OTHERWISE SPECIFIED)

- 1. LINEAR SPECIFICATIONS:
 LINEAR STROKE: 25 mm
 ENC. RESOLUTION(+A/-A;+B/-B): 5 um
 ENCODER REPEATABILITY: 20 um
 INDEX LOCATION(+Z/-Z): 2 mm R.H.S
 OPERATING VOLTAGE: 48 Vdc
 COIL RESISTANCE: 25 Ohm
 COIL INDUCTANCE: TBD mH
 PEAK FORCE: 200 N @ 48Vdc, 2.3A
 FORCE CONSTANT: 87 N/A
 MOVING MASS: 0.800 kg
 TOTAL MASS: 14.8 kg
- 2. VACUUM OPTION: TBD
- 3. SPRING OPTION: YES
- 4. OPERATING TEMPERATURE: 0°C TO 40°C
- 5. PLATING: CERAKOTE BLACK

REVISIONS				
REV	ECR	DESCRIPTION	DATE	APPROVED



PIN No	HDB-26P
1	(L) PH. A+
2	(L) PH. B+
3	(L) PH. Z+
4	NC
5	NC
6	NC
7	(R) PH. B+
8	(R) PH. A+
9	(R) PH. Z+
10	(L) PH. A-
11	(L) PH. B-
12	(L) PH. Z-
13	(R) COASE HOME *
14	NC
15	NC
16	(R) PH. B -
17	(R) PH. A -
18	(R) PH. Z -
19	+5 VDC
20	5V RTN
21	(L) COIL+
22	(L) COIL+
23	(L) COIL -
24	(L) COIL -
25	(R) MOTOR -
26	(R) MOTOR +

PIN No 13: NC (W/O GEAR)

REF. NUMBER	LAL300 MAG
CONTRACT	LPL125-030

UNLESS OTHERWISE SPECIFIED
 ALL DIMENSIONS ARE IN MM
 BREAK EDGES AND REMOVE BURRS
 TOLERANCES
 X: ±0.5 X.X: ±0.1
 X.XX: ±0.03 ANGLE: ±0.1°
 CONCENTRICITY: ±0.025
 ROUNDNESS: ±0.025
 EDGE BREAKS: 0.2 MAX
 ALL DIMENSIONS AND TOLERANCES ARE FINAL

MATERIAL:	NAME	DATE
FINISH:	DWN BY	TV 08/11/22
MACHINE FINISH: 1.6	CHK BY	TV 08/11/22
INTERPRET PER: ASME Y14.5-2009	ENG APP	TV 11/22/22
THIRD ANGLE PROJECTION	MFG APP	
	QA APP	

PROPRIETARY AND CONFIDENTIAL
 THE INFORMATION CONTAINED IN THIS DRAWING IS THE SOLE PROPERTY OF SMAC. ANY REPRODUCTION IN PART OR AS A WHOLE WITHOUT THE WRITTEN PERMISSION OF SMAC IS PROHIBITED.

SMAC MOVING COIL ACTUATORS 5807 VAN ALLEN WAY CARLSBAD CA, 92008 (760) 929-7588	
TITLE: LPL125-030-75-1F5	
SIZE: B SCALE: 1:2 DO NOT SCALE	PART NO: LPL125-030-75-1F5 REV: A SHEET: 1 / 1